

# SAN DIEGO HOME/GARDEN

LIFESTYLES

**SUMMER**  
IDEAS FOR OUTDOOR ENTERTAINING  
**SIZZLE**

28<sup>th</sup> Annual  
**SILVER FORK  
AWARDS**

WWW.SDHG.NET

\$3.95

077



0 74470 65895 5

JULY 2009

The  
**ULTIMATE**



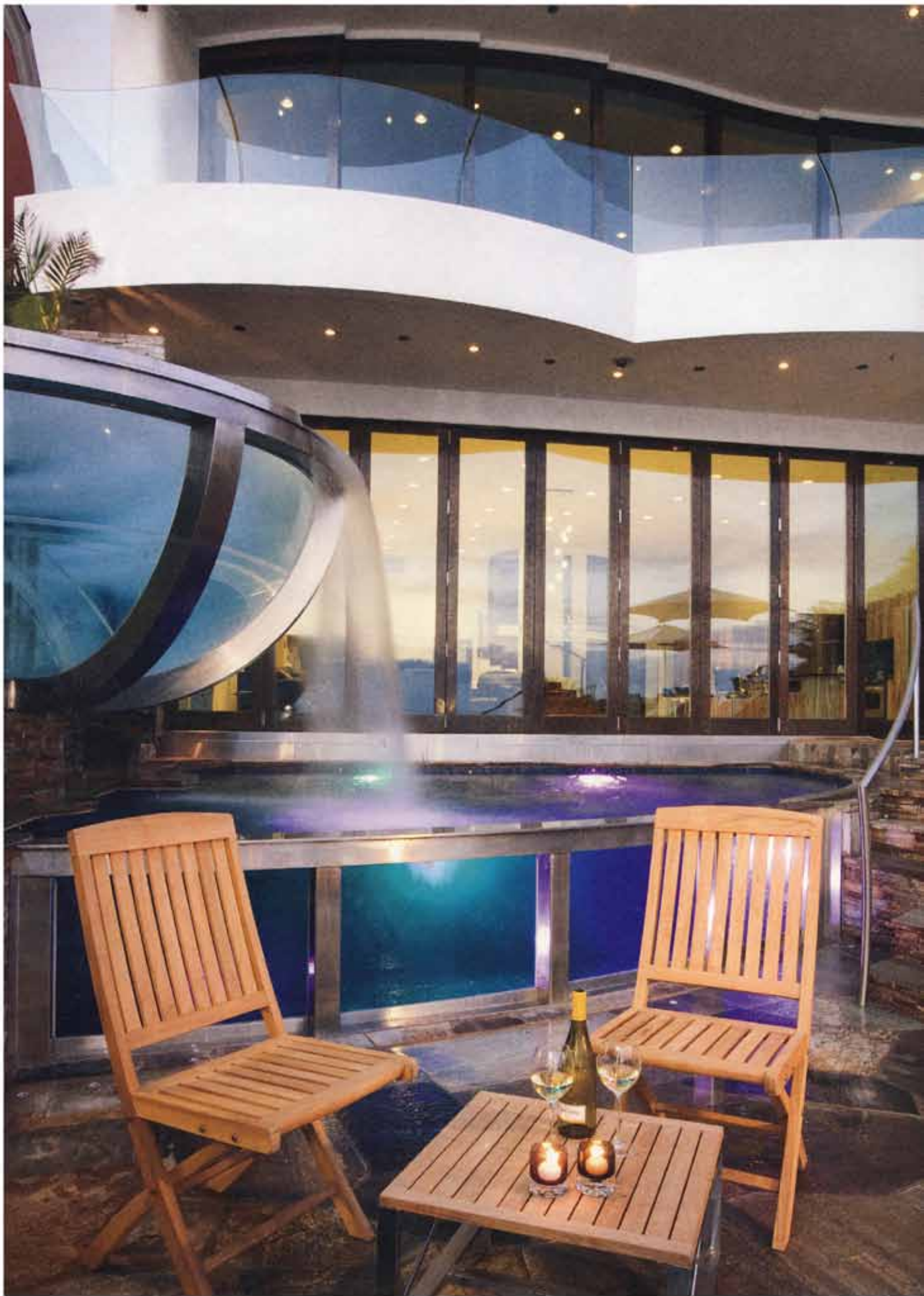
WOLFRAM KALBER

**BEACH  
HOUSE**

*A celebration of  
oceanfront living*

BY EVA DITLER | PHOTOGRAPHY BY DAVID HARTIG







Previous pages, left: Wolfram Kalber says this house he designed in Carlsbad is a sculptural work of art that embraces the sea. Previous pages, right: The view from the rooftop's sunbathing deck. Left: The Champagne-glass spa overflows into the pool during a romantic twilight. The entertainment room, with catering kitchen, lies behind the bifolding teak doors. Above: Curved forms were integral throughout the home's design. Glass doors in the living area are serpentine curving doors — both the curves meet at the center and curve at opposite directions. Furniture and accessories throughout home from BoConcept; artwork from Scott White Contemporary Art.

**D**esigner/general contractor Wolfram Kalber likes to say that the 7,000-square-foot, eight-bedroom residence he designed on Carlsbad's shorefront for homeowner Fred Kiko "reflects the sensuality of the sea."

"The most important aspect of the design," says Kalber, "was that the house capture the majestic Pacific Ocean and its views. The fluid forms throughout the house basically came from the shapes of the sea — the waves breaking, the sand changing."

Although Kiko agrees, he probably wouldn't speak to you about the house that way. An electrical engineer who patented the first high-speed filter for

the Internet and now owns a home-automation company, he usually talks about the brains, not the beauty of the house. Dual dimmer switches, automatic mood and spot lighting, eight videotaping cameras, the mechanisms that program everything electrical on the home's three levels — these are the subjects that turn him on. He might even discuss the value of the plumbing facilities in the pool pump room.

"I pay more attention to function, flexibility, space," says Kiko. "I gave Wolf free rein on style. Wolf is very creative. Everyone that sees this house loves it whether they are four or eighty."

What one sees first are the sculptural curves of the exterior façade, inspired, says Kalber, by one of his favorite architects, Antoni Gaudi. (In fact, Kalber



A curved buffet separates the dining area from the kitchen. Cabinet doors made of curly koa from Hawaii have state-of-the-art hinges and open like aircraft cabinets. The fishhook emblem in the ceiling is a Hawaiian good-luck symbol.







labels the house "a modern Gaudi.") These sweeping forms are dramatized by the stucco's crystal white color, but in the evening, sunsets transform the whiteness into warmer, cozier tones.

"The color depends on what time of day it is and give the forms constant movement," says Kalber. "The house embraces the light and mood of the day."

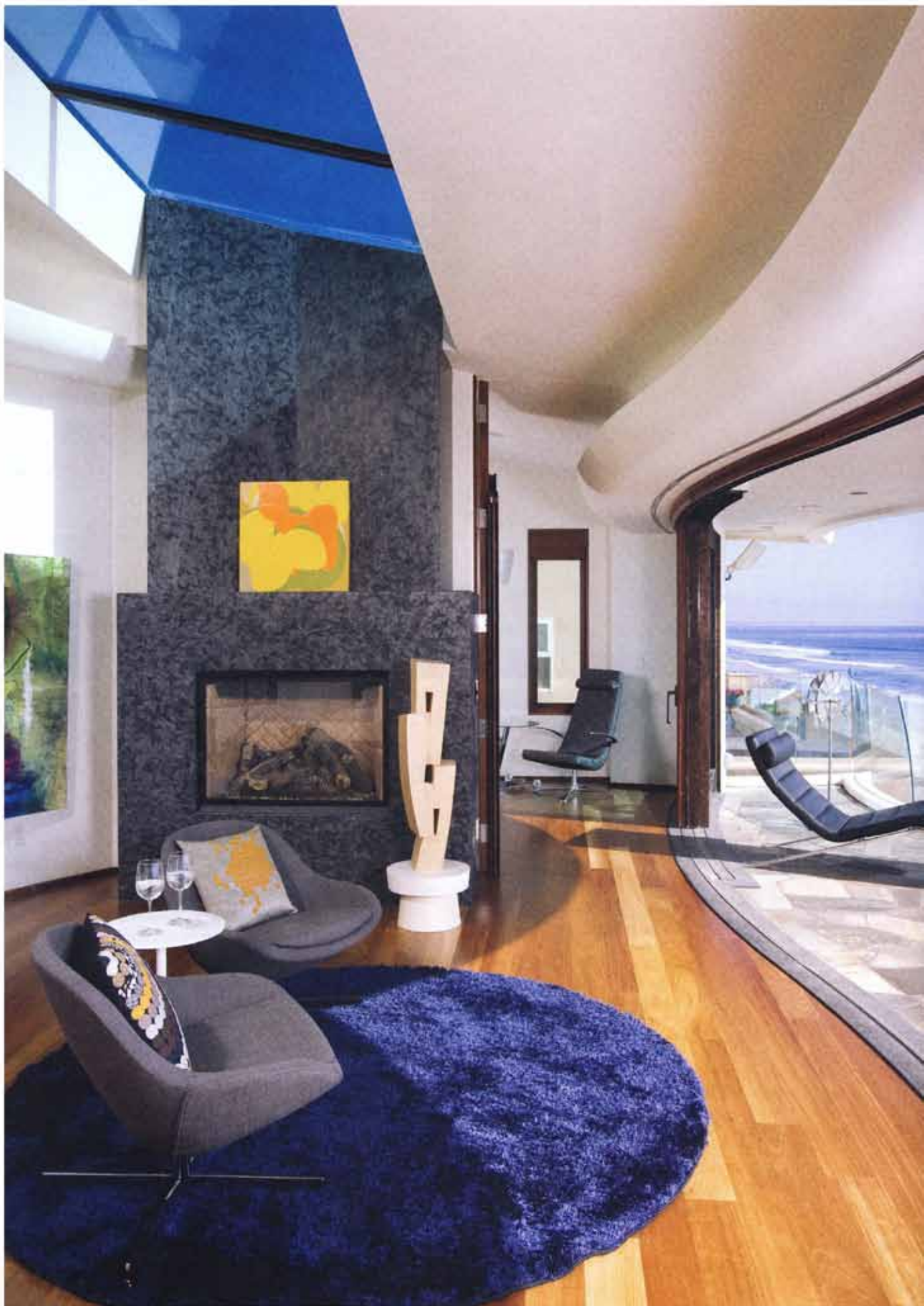
Setting the mood by the entrance from the street are two contemporary cast-glass art pieces that swirl above copper-clad garage doors in a modernist interpretation of a mother whale and her calf. Upon entering the home, an expanse of ocean is immediately visible through glass doors that extend the breadth of the great room — a dining room, living area and kitchen that flow together as one grand space. Here afrormosia teak flooring and doors, and curly koa kitchen cabinetry add warmth and a sense of serenity.

"I wanted the kitchen cabinets to reflect a wave," says Kalber. "The curls actually shimmer and reflect sun to add more beauty and texture and depth. Tom Prychun was the cabinetmaker. He was a former yacht cabinetmaker so the challenge of the curves not only curving upward, but in a radius, proved to be no challenge for him."

An island also is curved, but what makes sense for Kiko are the kitchen's pullout garages and spice racks, hidden appliances and the fact that, because of the way the kitchen is arranged, the chef can cook and be part of the action at the same time.

"The kitchen is really neat and functional," says Kiko. "Eventually we plan to have a system where, when you finish dinner, you hit a button and hydraulics will bring down glasses and turn the area into a bar. It's a great place to hang out. In fact, the house is

Opposite top: It was challenging to find a stone that could be curved for the living room fireplace. Crema Marfil limestone was selected. The veining in the stone is all book-matched to subtly blend into the wall. Opposite bottom: One can enjoy the ocean view from anywhere in the master bath — including the sculptured Italian tub, which was raised onto a glass-tile platform. Curving cocobolo cabinets were hand-carved. Above: Originally a bedroom designed for the homeowner's daughter, the room adjacent to the master bedroom now is a cozy home office.





The master bedroom's Brazilian sandstone fireplace was selected because its texture and color imitate beach sand. The material provides a striking contrast with the wood floor and warm ivory white walls. The skylight brings the moonlight directly into the room. The stone flooring's radiant heat warms the terrace on chilly nights.

fantastic for entertaining. All I need is an excuse to have a party."

Kiko is deeply involved with philanthropic causes, so fund-raising parties occur on a frequent basis. The pool-level party room (below the great room) was designed exclusively for entertaining and features a catering kitchen, pool and Ping-Pong tables, and three wide-screen TVs with surround sound for major sporting events. Open the party room's 12-foot-high bifolding teak doors leading to the pool and there is no barrier between inside and out.

"The pool, with an Olympic-grade swim jet, is a work of art in itself," says Kalber. "I wanted to design something unique with the spirit of entertaining. Floating above the pool is the one and only Champagne-glass spa — a spa that resembles an overflowing Champagne glass that can accommodate 10 to 12 people."

That's not the only over-the-top idea

for the pool. Yet to come is a revolving glass dance floor that doubles as a pool cover. "Basically," says Kiko, "it's a quarter of a pie, about a 24-foot radius, with six-inch stainless-steel I beams that have glass inserts between them. Five hydraulically driven wheels will roll the thing back and forth. It will have many functions: a pool cover, a solar collector, a dance floor and a patio deck."

Not that another patio deck is needed. Two to three hundred people can fit on an already-existing expansive layer of decks and patios. There's a pool deck with a third full-on kitchen facility boasting a barbecue, an island, sink, warming drawers and a refrigerator. There's a dining terrace designed for maximum ocean viewing (although there is a pop-up TV screen in case you get bored). There's a suntanning

*continued on page 56*